

# Wifi for employees and students

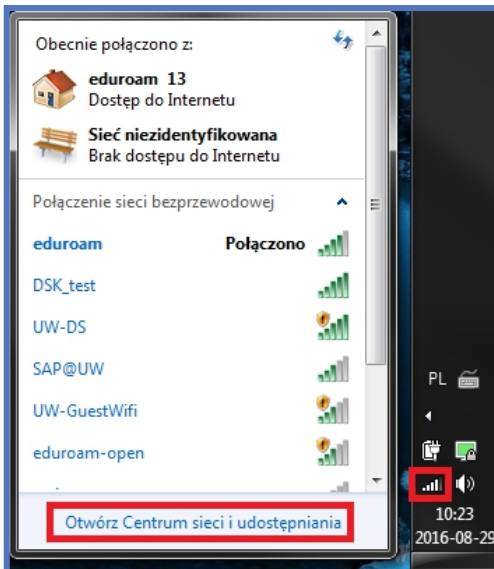
## Removing eduroam profile - Windows 7



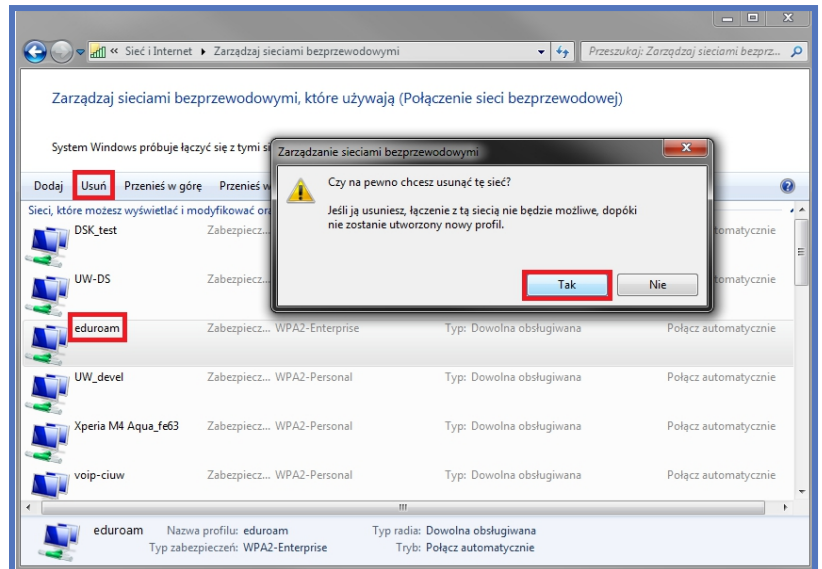
**Eduroam** (Edu-cation roam-ing) is a world-wide project to provide wireless access to students, researchers and university staff. These users have wireless internet access in all participating organisations, without the need to reconfigure their devices.

### Step by step guide

1. Click on the network icon in the taskbar
2. Click the "Open Network and Sharing Center" button



3. In the network management panel, select the "Manage wireless networks" tab.



4. In the list of networks select the profile of the eduroam network
5. Click the delete button and confirm

